

AVEVA Reports

The leader in industrial reporting technology

User friendly reporting software for automation

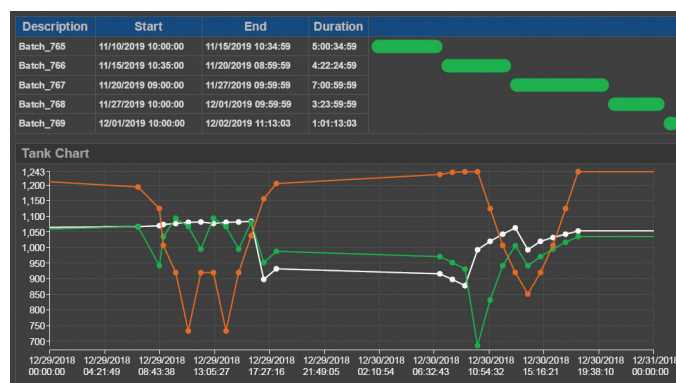
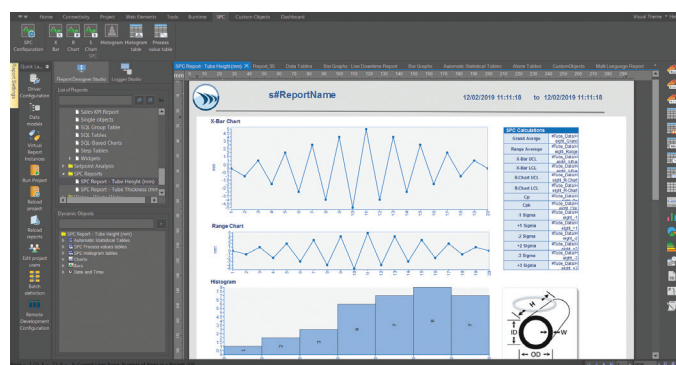
Award-winning software solution for compliance and performance, reports and dashboards. AVEVA Reports has become the industry standard. If you're still using Microsoft Excel, SAP Crystal Reports or Microsoft SQL Server Reporting Services (SSRS) for your automation related reports and KPI dashboards, then it's time to explore AVEVA Reports.

New features

- Centralized advanced visualization manager and time definition manager
- Custom objects builder – Gantt chart, circular chart and other object examples
- Cost calculator for utilities billing and energy accounting
- New report settings panel
- XML report output format
- MQTT real-time driver
- On-line electronic signature
- OPC DA reporting data server
- System driver for diagnostic analytics
- Tested with Windows Embedded 7 (SP-1), 8, 10, 10 (IOT)
- API toolkit for connector plug-in development
- Server 2019 support

Centralized advanced visualization and time definitions

Create and manage visualization conditions and time schedules in one place and reference them throughout

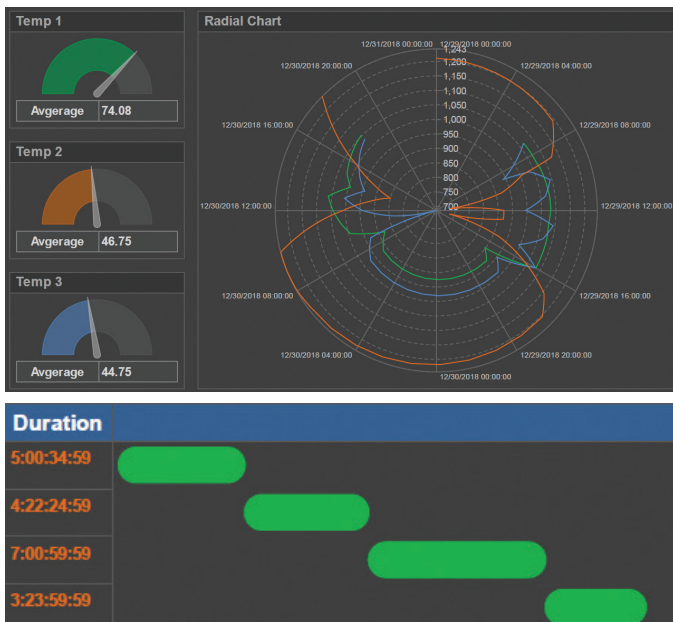


Gantt Chart display object showing sequence of batches

your report objects or project. Being able to make changes in one place and referencing conditions makes system-wide updates a quick, straightforward process while significantly reducing development time and errors.

Custom display objects

A new object builder lets users expand the graphics set with their own display objects. New objects are easily applied by anyone, through standardized configuration menus.



Custom displays objects

MQTT driver

In the Internet of Things era, the most common protocols for data access are OPC UA and MQTT with JSON Messaging. AVEVA Reports supports both protocols to access IoT, IIoT, and Industry 4.0 device data with a new configurable MQTT driver as well as a OPC UA driver.

The interface shows a 'Name' field with 'Machine States' and a 'Description' field. Below is a table of conditions:

Name	Description
Avc1	
Machine States	
Avc3	
Avc4	
Avc5	
Avc6	
Avc7	
Avc8	
Avc9	
Avc10	
Avc11	
Avc12	
Avc13	
Avc14	

Settings include 'From' (1) and 'To' (1) with 'Display text' (Manual Stop). Display Style is 'Arial (European)' with font size 8. Font Color is black and Back Color is red. A table of conditions is shown below:

From	To	Display text
0	0	Please Fill In Reason Code
1	1	Manual Stop
2	2	Parts Loading
3	3	Tool Setup
4	4	Shift Change
5	5	Tool Break
6	6	Program Error
7	7	Machine Alarm
8	8	Parameter out of Spec.
9	9	Idle - No Parts

Buttons: OK, Cancel, Export to XML, Import from XML.

The interface shows a 'Name' field with '3rd Shift' selected. Below is a table of time definitions:

Name	Description
3rd Shift	
1st Shift	
2nd Shift	
MTD	
YTD	

Define time period settings: Absolute or relative period definition, Start of report period (0 days, 07:00:00), End of report period (0 days, 15:00:00). Buttons: OK, Cancel, Export to XML, Import from XML.

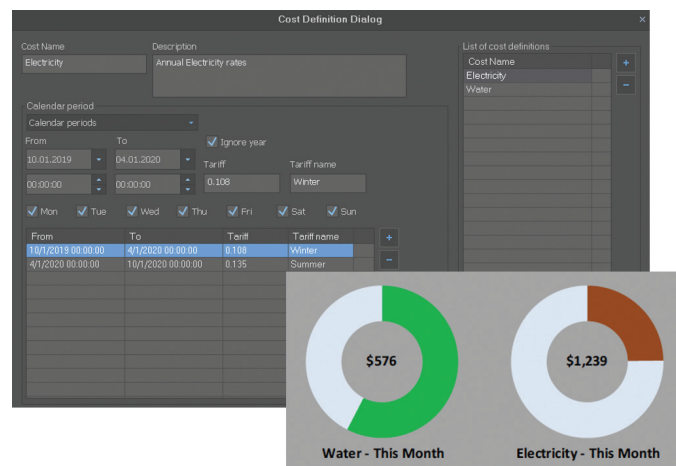
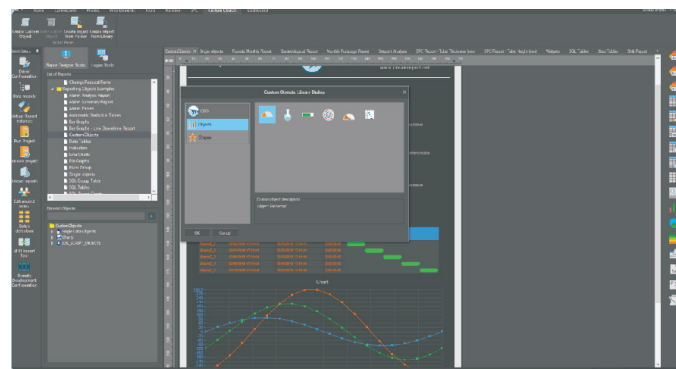
Centralized Advanced Visualization and Time Definitions

XML report output format

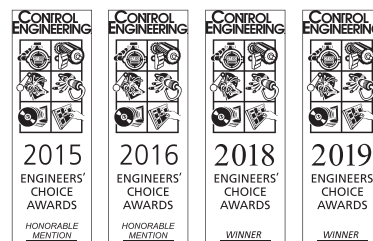
XML (Extensible Markup Language) is an ideal solution for data transfer, providing both a human and machine readable format. AVEVA Reports can now automatically generate reports in XML format for integration with other systems, typically automation and regulatory related.

Cost calculator

Automated cost calculations require use of schedules and variables to determine the proper costs to use at any moment in time. AVEVA Reports supports a very powerful cost calculation engine, enabling it to be an ideal solution for any billing or cost allocation application.



Rate and tariff calculations associated with meter readings



AVEVA

aveva.com

© 2021 AVEVA Group plc and its subsidiaries. All rights reserved.
AVEVA and the AVEVA logo are a trademark or registered trademark of AVEVA Group plc in the U.S. and other countries.
All product names mentioned are the trademarks of their respective holders.