

Industrial HiVision

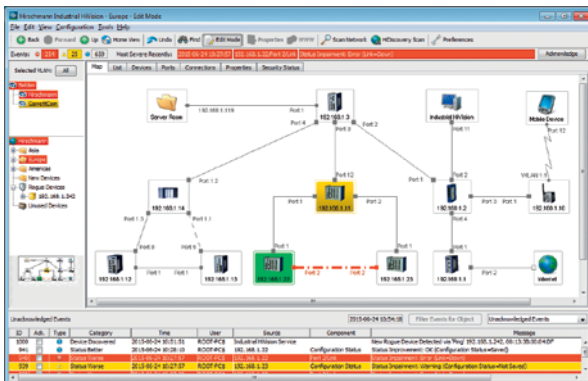
Network Management Software

PRODUCT BULLETIN



Improve productivity, security and network uptime by using Hirschmann's Industrial HiVision to configure and monitor Ethernet networks.

- **Easily identify, map and configure all network infrastructure**, including SNMP-enabled devices from any manufacturer and the latest Hirschmann products.
- Achieve **Zero Touch Device Replacement configuration** to allow streamlined device replacement without needing network engineering expertise.
- Find faults quickly and achieve timely remediation that **improves uptime and security**.
- Create **highly visual, customized dashboards** for live network supervision through integrations with InfluxDB® and Grafana®.
- **Download a free version** of the software for your unlimited use to **experience the benefits before you buy**.



Unlock the power of Industrial HiVision by using a fully functional, free-of-charge 16 node version for as long as you like.

Download the software today from www.belden.com/resources/hivision-promotion-license. When it's time to deploy, know that only the server application is licensed. The client software is free.

Benefits at a Glance

- Setup wizard makes implementation and configuration easy
- Zero Touch Device Replacement configuration simplifies replacement of Hirschmann switches
- Scalable system with hierarchical structure
- Auto-scheduled device configuration backup
- PoE wizard to optimize the use of available power
- Alerts for unauthorized system changes
- Network security lockdown feature
- Comprehensive documentation for asset management
- LDAP or RADIUS user authentication with audit trail of user action history
- VLAN viewer, MIB browser, and Path Availability Calculator
- Integrated OPC DA and UA servers
- In-depth integration of any SNMP-enabled devices
- Simultaneous software updates for multiple devices
- Event forwarding to Syslog server
- TSN configuration for Hirschmann switches
- Windows and Linux versions available with multiple language support

Industrial HiVision is a proven solution that saves you time, reduces errors, streamlines device commissioning and replacement in the field, and provides a snapshot of network health that increases availability and better utilizes power while also enhancing security.

Support System Monitoring Needs – Both Now and In the Future



Ethernet networks grow and change quickly, making them increasingly difficult to manage and secure them. Industrial HiVision was designed for automation networks and has been field-tested at thousands of facilities.

Industrial HiVision integrates all the newest Hirschmann products, as well as all SNMP-enabled devices, such as switches, PLCs, I/O modules and HMI panels, from multiple vendors into a single network management application. The network topology is recognized automatically with all network nodes and links accurately displayed on screen, including unmanaged switches and hubs.

Using the enhanced MultiConfig feature, you can simultaneously configure hundreds of devices, even while they are in operation, and benefit from improved usability with new dialogs and parameters from the latest Hirschmann HiOS firmwares. MultiConfig supports Zero Touch Device Replacement configuration, simplifying installation of Hirschmann replacement devices in the field and reducing manual effort. This not only saves time, but also reduces errors and ensures consistent configuration of the network.

And through integration with existing tools, such as InfluxDB and Grafana, it's possible to capture and analyze plant and network data across different systems and sensors – and unite it all within a highly visual and customizable dashboard. With a single view of performance data and thresholds, network administrators can address status changes before they result in network downtime.

Applications

As industrial networks become larger and more complex, it's critical to map and supervise the network devices. Industrial HiVision can be used wherever networks have high availability, power, and security requirements. The software requires no special IT or engineering knowledge and its wizard guides you systematically through the network management set-up process.

Industrial HiVision supports these types of applications:

- Large networks with devices from various third-party manufacturers
- Networks with many parameters per device or manufacturer-specific device parameters
- Critical industrial networks which require full management
- Edge networks which require performance and status visualization

Markets

Industrial HiVision is ideal for use in all settings with industrial networks that need monitoring. This includes the power and utility, transportation, water/wastewater, factory automation and consumer packaged goods industries. Additional application areas include oil and gas, renewable energy, machine building, and mining.



Industrial HiVision

Order No.	Type
943 156-032	Industrial HiVision, 32 nodes
943 156-064	Industrial HiVision, 64 nodes
943 156-128	Industrial HiVision, 128 nodes
943 156-256	Industrial HiVision, 256 nodes
943 156-512	Industrial HiVision, 512 nodes
943 156-124	Industrial HiVision, 1024 nodes
943 156-248	Industrial HiVision, 2048 nodes
943 156-496	Industrial HiVision, 4096 nodes

The Hirschmann Annual Maintenance Plan also is available for cost effective updates. It saves up to 60% compared to the purchase of one-time updates.

Annual Maintenance Plan

Order No.	Type
942 021-032	Annual Maintenance Plan for Industrial HiVision for 32 nodes
942 021-064	Annual Maintenance Plan for Industrial HiVision for 64 nodes
942 021-128	Annual Maintenance Plan for Industrial HiVision for 128 nodes
942 021-256	Annual Maintenance Plan for Industrial HiVision for 256 nodes
942 021-512	Annual Maintenance Plan for Industrial HiVision for 512 nodes
942 021-124	Annual Maintenance Plan for Industrial HiVision for 1024 nodes
942 021-248	Annual Maintenance Plan for Industrial HiVision for 2048 nodes
942 021-496	Annual Maintenance Plan for Industrial HiVision for 4096 nodes

*Nodes = IP addresses

